



# Einblick Software Entwicklung – Akteure, Aufgaben, Abstimmungen

MPG PubMan Days 2008

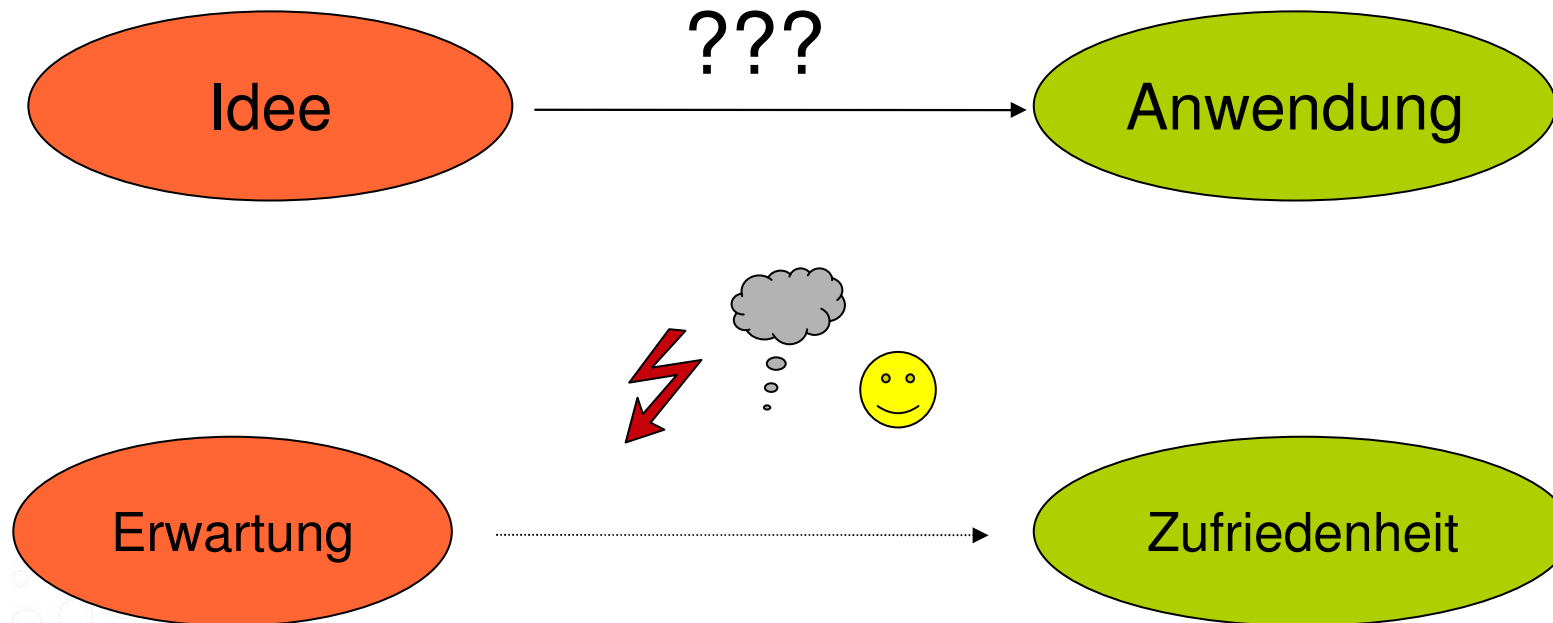
5. November 2008, Berlin, Harnack-Haus

Ulla Tschida



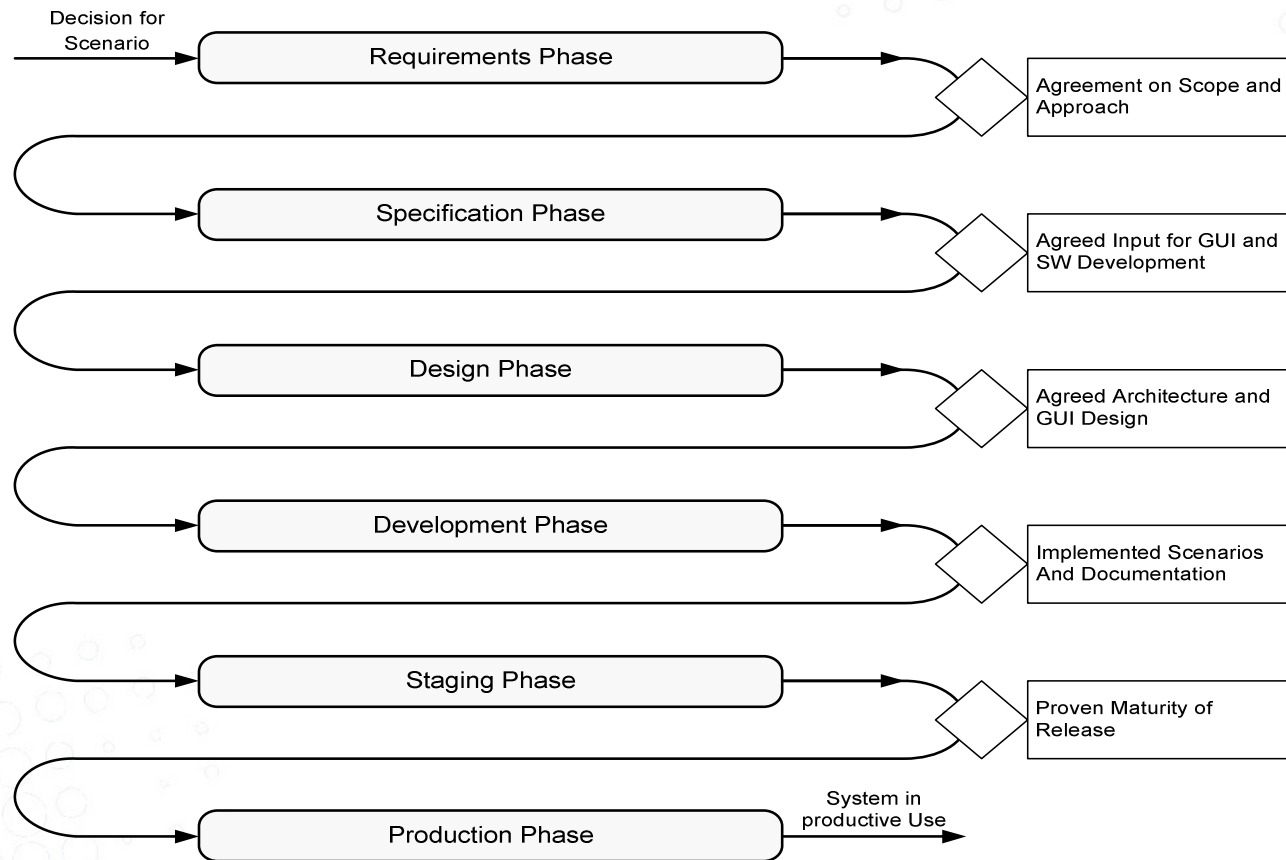


## Software/Service Entwicklung en gros ...





## ... und en detail





## Ebenen der Release-Planung

- Langfristige, übergeordnete Ziele
  - MPG Gremien (sInfo, BAR, Präsidium)
  - MPDL Abteilungen und Stab
  - Projekte
- Interne Abstimmungsprozesse
  - Zeitliche und inhaltliche Abstimmungen?
  - Artefakte?
  - Effizienz und Effektivität?
  - Kommunikationsdefizite?
- Tools für operative Umsetzung
  - JIRA Issue-Tracking Tool
  - CoLab

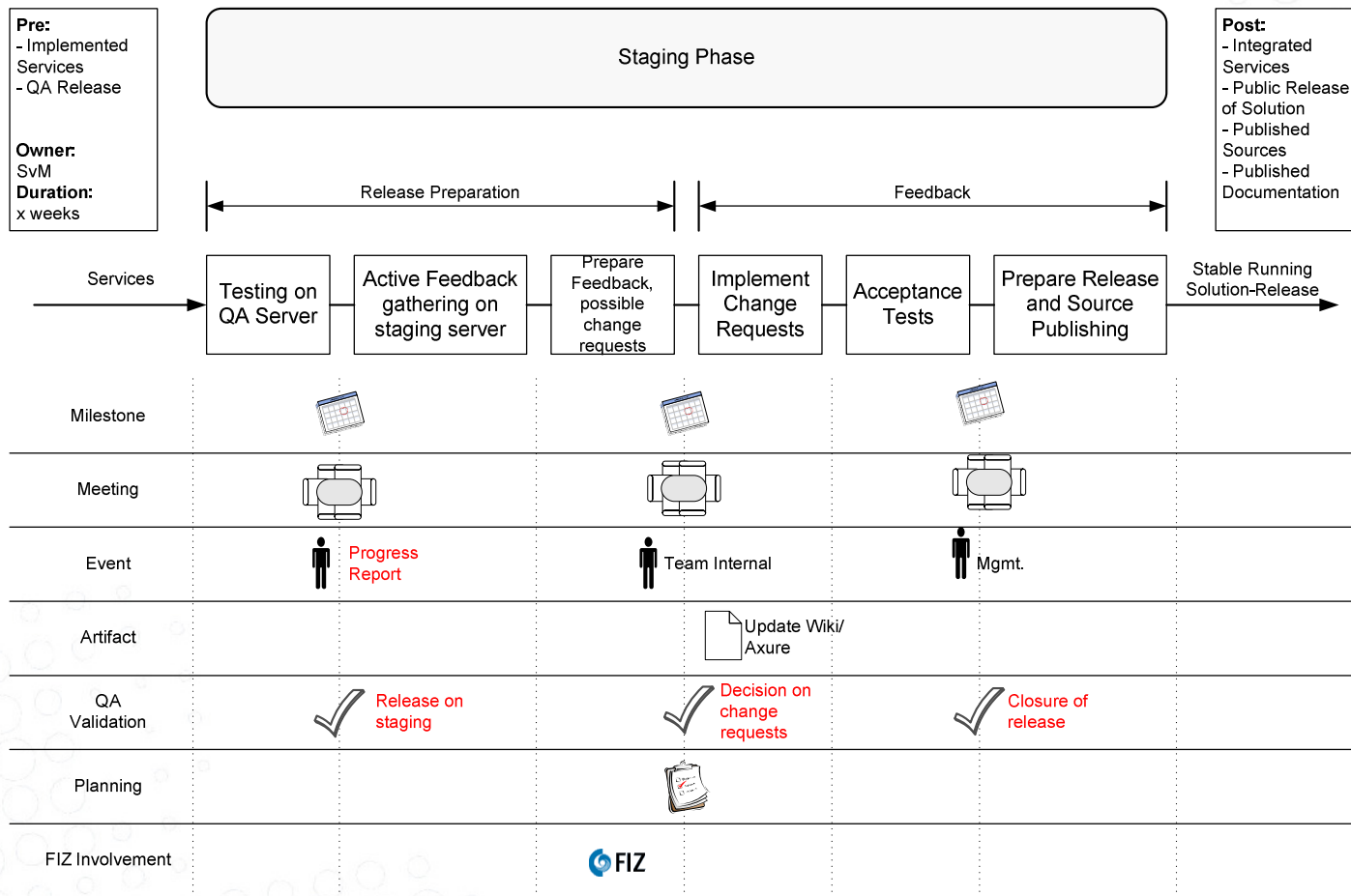


## Beispiel Anwendung PubMan – wer macht was?

- Service Management
  - Funktionale Verantwortung
    - Idee => Anforderungen => Szenarien=> Spezifikation
  - Primäre Schnittstelle zum Institut/Partner, Projektplanung
  - Support und Trainings
- Software Development
  - Design und Implementierung
    - Service-Architektur
    - Anwendungen
    - Integration von Services und Anwendungen
  - Primäre Schnittstelle zum Partner FIZ Karlsruhe, Projektplanung
  - Software Dokumentation&Qualität, Release-Environment
- User Interface Engineering
  - Analysen, Konzepte und Design
  - Interface Entwicklung
  - Schnittstelle zu Endnutzern, Projektplanung



## Beispiel interner Prozess





## Beispiele aus JIRA (screenshots bzw. live)

- Bird Eye View – Überblick über Stand der einzelnen Releases pro Anwendung
- Jede Einheit hat spezifische Tasks (Specification Task, GUI Design Task, Design Task, Implementation Task)
- Verschiedene Projekte (Application Services, Bug Tracking, Test Scenarios, Common Services, Citation Style, etc.)
- Reports/Filter Möglichkeiten (meine Tasks, Tasks offen für 3.8, etc.)
- Kommentare/Diskussionen pro Tasks
- Anhängen von Dokumenten (screenshots, Konzepte)
- Einbettung von Tasks in Abläufe (is blocker of, is depends on, etc.)





1 2 3 4 5 6 7 8 9 10 11 12

Key	Fix Version/s	Summary	Status	REQ	SPEC	GUI	DES	CSS	IMP	STA	PROD	Pr	Workflow
<a href="#">MP-11</a>	R3	Browse&Display	Completed										<a href="#">Restart s</a>
<a href="#">MP-16</a>	R3	Context (Collection) Administration	Completed										<a href="#">Restart s</a>
<a href="#">MP-8</a>	R3	Easy Submission (manual entry, fetch metadata from ArXiv, upload BibTex reference file, create item from template)	Completed										<a href="#">Restart s</a>
<a href="#">MP-13</a>	R3	Export	Completed										<a href="#">Restart s</a>
<a href="#">MP-10</a>	R3	Feeding local webpages - phase 1	Completed										<a href="#">Restart s</a>
<a href="#">MP-14</a>	R3	Organisational unit management	Completed										<a href="#">Restart s</a>
<a href="#">MP-17</a>	R3	Quality Assurance	Completed										<a href="#">Restart s</a>
<a href="#">MP-12</a>	R3	Search	Completed										<a href="#">Restart s</a>
<a href="#">MP-9</a>	R3	Submission	Completed										<a href="#">Restart s</a>
<a href="#">MP-15</a>	R3	User Management	Completed										<a href="#">Restart s</a>
<a href="#">MP-43</a>	R3.5	Export to Endnote 10/11	Completed										<a href="#">Restart s</a>
<a href="#">MP-42</a>	R3.5	Moderator Workspace	Completed										<a href="#">Restart s</a>
<a href="#">MP-41</a>	R3.5	New Framework	Completed										<a href="#">Restart s</a>
<a href="#">MP-44</a>	R3.5	Revision of pubman entry page	Completed										<a href="#">Restart s</a>
<a href="#">MP-50</a>	R3.8	Autosuggest journals	Started										<a href="#">SetStatu</a> <a href="#">Comple</a> <a href="#">Put on h</a>





Select: [Open Issues](#) [Road Map](#) [Change Log](#) [Popular Issues](#) [Subversion Commits](#)

## Road Map

- ☐ [View personal road map](#)  
☐ Scope: next 3 versions | [all versions](#)

**R3.8** (Release Notes)

Progress:   
46 of 46 issues have been resolved

	<a href="#">AS-296</a> FIXED	<a href="#">Design UC PM SM 09 validate item</a>		
	<a href="#">AS-425</a> FIXED	<a href="#">Check revised design for searching and modify in case needed</a>		
	<a href="#">AS-537</a> FIXED	<a href="#">Test migration of data from currently used build 1.0.beta3 build.297 to pre-release 1.0.beta4 build 306</a>		
	<a href="#">AS-468</a> FIXED	<a href="#">Definition/re-definition of mappings eDoc - PubMan</a>		
	<a href="#">AS-473</a> FIXED	<a href="#">Finalize open questions for migration</a>		
	<a href="#">AS-467</a> FIXED	<a href="#">Specification bibtext Export</a>		
	<a href="#">AS-539</a> FIXED	<a href="#">Define and implement test cases for search component</a>		
	<a href="#">AS-102</a> FIXED	<a href="#">Revise Architectural Blueprint</a>		
	<a href="#">AS-194</a> WON'T FIX	<a href="#">Matrix Actions/Roles/Constraints</a>		
	<a href="#">AS-523</a> FIXED	<a href="#">Define requirements for Shibboleth</a>		
	<a href="#">AS-511</a> FIXED	<a href="#">Input for mapping and open questions for migration</a>		
	<a href="#">AS-534</a> FIXED	<a href="#">Item views should enable multiple-lines with scrolling (view All) possibility for longer fields such as Top, Abstract etc.</a>		
	<a href="#">AS-516</a> FIXED	<a href="#">Run the transformation to item.xml + fulltexts</a>		
	<a href="#">AS-469</a> FIXED	<a href="#">new citation style</a>		
	<a href="#">AS-498</a> FIX LATER	<a href="#">test adoption to external MPS Shibboleth providers</a>		
	<a href="#">AS-535</a> FIXED	<a href="#">Anonymous retrievals of statistics</a>		
	<a href="#">AS-520</a> FIXED	<a href="#">Change citation schema to proper metadata elements (and change processing component)</a>		
	<a href="#">AS-308</a> FIXED	<a href="#">Check UC specification for Controlled Vocab</a>		
	<a href="#">AS-538</a> FIXED	<a href="#">Controlled Vocab services interface implementation</a>		

[User Workload Report](#)  
[Version Workload Report](#)  
[Time Tracking Report](#)  
[Single Level Group By Report](#)  
[Multiple Level Group By Report](#)

## Preset Filters

- [All](#)
- [Outstanding](#)
- [Unscheduled](#)
- [Assigned to me](#)
- [Reported by me](#)
- [Resolved recently](#)
- [Added recently](#)
- [Updated recently](#)
- [Most important](#)

## Project Summary

	<a href="#">Closed</a>	11	2%
	<a href="#">Not Started</a>	57	12%
	<a href="#">Started</a>	20	4%
	<a href="#">On Hold</a>	15	3%
	<a href="#">Ready</a>	58	12%
	<a href="#">Completed</a>	320	6%
	<a href="#">Suggested For Rejection</a>	3	1%
	<a href="#">Rejected</a>	9	2%

## Open Issues

By Priority

	<a href="#">Blocker</a>	4	4%
	<a href="#">Critical</a>	4	4%
	<a href="#">Major</a>	14	15%
	<a href="#">Minor</a>	73	7%
	<a href="#">Trivial</a>	1	1%

By Assignee

	<a href="#">Rudolf W. Nitsch</a>	2	2%
--	----------------------------------	---	----



## MPDL JIRA

Configure: [ON](#) | [OFF](#)

All Projects
<a href="#">Application Services</a> (AS)
<a href="#">BirdEye - All Projects</a> (MP)
<a href="#">Citation Style</a> (CS)
<a href="#">Common services</a> (CSRV)
<a href="#">Digital Collections</a> (DC)
<a href="#">FACES</a> (FAC)
<a href="#">FACES Bug Tracking</a> (FACESBUG)
<a href="#">General Activities</a> (GA)
<a href="#">Information Provision - Test</a> (IP)
<a href="#">Infrastructure</a> (FW)
<a href="#">Jira Admin</a> (JA)
<a href="#">MPDL Berlin</a> (MB)
<a href="#">Playground Project</a> (TST)
<a href="#">Prospective Activities</a> (PA)
<a href="#">PubMan Bug Tracking</a> (PUBMAN)
<a href="#">PubMan Bug Tracking - Admin</a> (ADM)
<a href="#">PubMan-Testing scenarios</a> (PMTS)
<a href="#">PUBMAN@NIMS</a> (NIMS)
<a href="#">VIRR</a> (VIR)
<a href="#">VIRR Bug Tracking</a> (VIRRBUG)

Saved Filters <a href="#">(Create New   Manage Filters)</a>
<a href="#">ApplicationServices (R3.8)</a>
<a href="#">Application services (R4)</a>
<a href="#">AS-DesignTasks(R3.8)</a>
<a href="#">AS-DesignTasks(R4)</a>
<a href="#">AS - GUIDesignTasks(R3.8)</a>
<a href="#">AS - GUIDesignTasks(R4)</a>
<a href="#">AS - ImplementationTasks(R3.8)</a>
<a href="#">AS - ImplementationTasks(R4)</a>
<a href="#">AS- MaintenanceTasks(R3.8)</a>
<a href="#">AS - OtherIssues(R3.8)</a>
<a href="#">AS - OtherIssues(R4)</a>
<a href="#">AS - SpecificationTasks(R3.8)</a>
<a href="#">AS - SpecificationTasks(R4)</a>
<a href="#">BirdEye - All projects</a>
<a href="#">BirdEye - Faces</a>
<a href="#">BirdEye - PubMan</a>
<a href="#">BirdEye - VIRR</a>
<a href="#">Lars's Tasks</a>
<a href="#">MethodsBasicServices</a>
<a href="#">MyGeneralActivities</a>



## Create Issue

Step 1 of 2: Choose the project and issue type...

\* Project:

\* Issue Type:

Please select...

Specification Task

GUI Design Task

Design task

Implementation Task

Maintenance Task

Improvement

New Feature

Task

Scope Agreement



Issue Details [\(XML\)](#) [Word](#) [Printable](#)

Key: [AS-505](#)  
Type: Implementation Task  
Status: Completed  
Resolution: Fixed  
Priority: Minor  
Assignee: [Friederike Kleinfurher](#)  
Reporter: [Thomas Endres](#)  
Votes: 0 [\(View\)](#)  
Watchers: 1 [\(View\)](#)

Available Workflow Actions

☐ [Reopen](#)

Operations

- ☐ [Assign this issue \(to me\)](#)
- ☐ [Clone and Move](#)
- ☐ [Clone this issue](#)
- ☐ [Comment](#) on this issue
- ☐ Create [sub-task](#)
- ☐ [Delete](#) this issue
- ☐ [Link](#) this issue to another issue
- ☐ [Move](#) this issue
- ☐ [Convert](#) to sub-task
- ☐ [Voting](#):  
You cannot vote or change your vote on resolved issues.

Application Services

**Integrate UnApi-Exports for BibTex, EndNote, APA in PubMan**

Created: 31/Jul/08 03:02 PM Updated: Thursday 03:00 PM

Component/s: [Export](#)  
Affects Version/s: None  
Fix Version/s: [R3.8](#)

[Return to search](#)  
Issues (Unresolved)

Original Estimate:	Unknown	Remaining Estimate:	Unknown	Time Spent:	Unknown
--------------------	---------	---------------------	---------	-------------	---------

File Attachments: None  
[Manage Attachments](#)

Image Attachments:



1. UnApi integration into View Item version.jpg  
(87 kb)

[Issue Links:](#) dependence

This issue depends on:  
 [AS-495](#) Implement UnAPI interface for Export ...

DaysComment: 9 weeks, 2 days ago

[All](#) [Comments](#) [Work Log](#) [Change History](#) [Transitions](#) [Subversion Commits](#)

Sort





Key: [AS-527](#)  
Type: Design task  
Status: Not Started  
Priority: Minor  
Assignee: [Julia Kurt](#)  
Reporter: [Bulatovic, Natasa](#)

Votes: 0 ([View](#))  
Watchers: 0 ([View](#))

#### Available Workflow Actions

☐ [Suggest for Rejection](#)

☐ [Start Work](#)

#### Operations

☐ [Assign this issue \(to me\)](#)

☐ [Clone and Move](#)

☐ [Attach file](#) to this issue

☐ [Attach screenshot](#) to this issue

☐ [Clone](#) this issue

☐ [Comment](#) on this issue

☐ Create [sub-task](#)

☐ [Delete](#) this issue

☐ [Edit](#) this issue

☐ [Link](#) this issue to another issue

☐ [Move](#) this issue

☐ [Convert](#) to sub-task

☐ [Voting](#):

You have not voted for this issue.

## Migration of <sub> <sup> tags from eDoc data to PubMan

Created: 26/Aug/08 12:49 PM Updated: 29/Sep/08 11:14 AM

Component/s: [Migration](#)

Affects Version/s: None

Fix Version/s: [R38-Migration](#)

Original Estimate:	Unknown	Remaining Estimate:	Unknown	Time Spent:	Unknown
--------------------	---------	---------------------	---------	-------------	---------

File Attachments:  
[Manage Attachments](#)

1. [sub\\_superscripts.html](#) (513 kb)
2. [subscript superscript in UTF-8.txt](#) (2 kb)

DaysComment: 7 weeks, 5 days ago

### Description

Please provide proposal/comments on how to deal with <sub> <sup> tags in eDoc metadata when migrating them to PubMan.

[All](#) [Comments](#) [Work Log](#) [Change History](#) [Transitions](#) [Subversion Commits](#)

[Sort](#)

[Forkel Robert](#) - [26/Aug/08 04:44 PM]

[ [Permalink](#) | [Delete](#) ]

It is hard to recommend a way to handle the migration if there are no ideas yet how to support the migrated data on pubman. in particula must be a mechanism to allow (and validate) inputting of such markup in the edit interfaces; there must be support - or at least an idea I might work - for exporting. as far as i know, jasperreports doesn't handle such markup by default.

naturally, since with pubman the data is stored (or at least transferred) as xml, the markup should be xml - i.e. not escaped/proprietary n but this would mean support in the jibx bindings would be needed right from the start.

[Bulatovic, Natasa](#) - [27/Aug/08 09:53 AM - edited]

[ [Permalink](#) | [Delete](#) ]



Issue Details [\(XML\)](#) [Word](#) [Printable](#)

Key: **PMTS-48**

Type: **ScenarioTest**

Status: **Test Fail**

Priority: **Minor**

Assignee: [Despoina Kanellopoulou](#)

Reporter: [Kondic, Nicole](#)

Notes: 0 [\(View\)](#)

Watchers: 0 [\(View\)](#)

Available Workflow Actions

[Restart testing](#)

Operations

[Assign this issue \(to me\)](#)

[Clone and Move](#)

[Attach file to this issue](#)

[Attach screenshot to this issue](#)

[Clone this issue](#)

[Comment on this issue](#)

[Delete this issue](#)

[Edit this issue](#)

[Link this issue to another issue](#)

[Move this issue](#)

[Voting:](#)

You have not voted for this issue.

[Vote for it](#) if you wish it to be fixed

PubMan-Testing scenarios

**advanced search Testing Szenario 1-3**

Created: 07/Jul/08 04:49 PM Updated: Friday 02:35 PM

Component/s: **None**

Affects Version/s: **None**

Fix Version/s: **3.8.2**

[Return to sea](#)

Issue 3 of 3 issue(s)

[<< Previous](#) | [PMTS](#)

Original Estimate:	Unknown	Remaining Estimate:	Unknown	Time Spent:	Unkn
--------------------	---------	---------------------	---------	-------------	------

Issue Links:

testing

This issue has bug:

[PUBMAN-474](#) Quick search - provides also Fulltext...

[PUBMAN-417](#) Exception when searching with

boolean...

[PUBMAN-412](#) Wrong behaviour of Advanced Search

[PUBMAN-554](#) error in advanced search when i search...

[PUBMAN-525](#) Strange behaviour when searching for ...

[PUBMAN-416](#) Exception when I click on an item in ...

Description

For testing, please use: [https://zim01.qwdq.de/repos/smc/trunk/05\\_Implementation/02\\_Testing/PubMan\\_Search\\_Tests.xls](https://zim01.qwdq.de/repos/smc/trunk/05_Implementation/02_Testing/PubMan_Search_Tests.xls)

[All](#) [Comments](#) [Work Log](#) [Change History](#) [Transitions](#) [Subversion Commits](#)

[Friederike Kleinfurher](#) - [15/Jul/08 03:21 PM]

[ [Permalink](#) ]

Tested and committed results to rep

[Friederike Kleinfurher](#) - [18/Jul/08 01:50 PM]

[ [Permalink](#) ]

Tested and committed results to rep



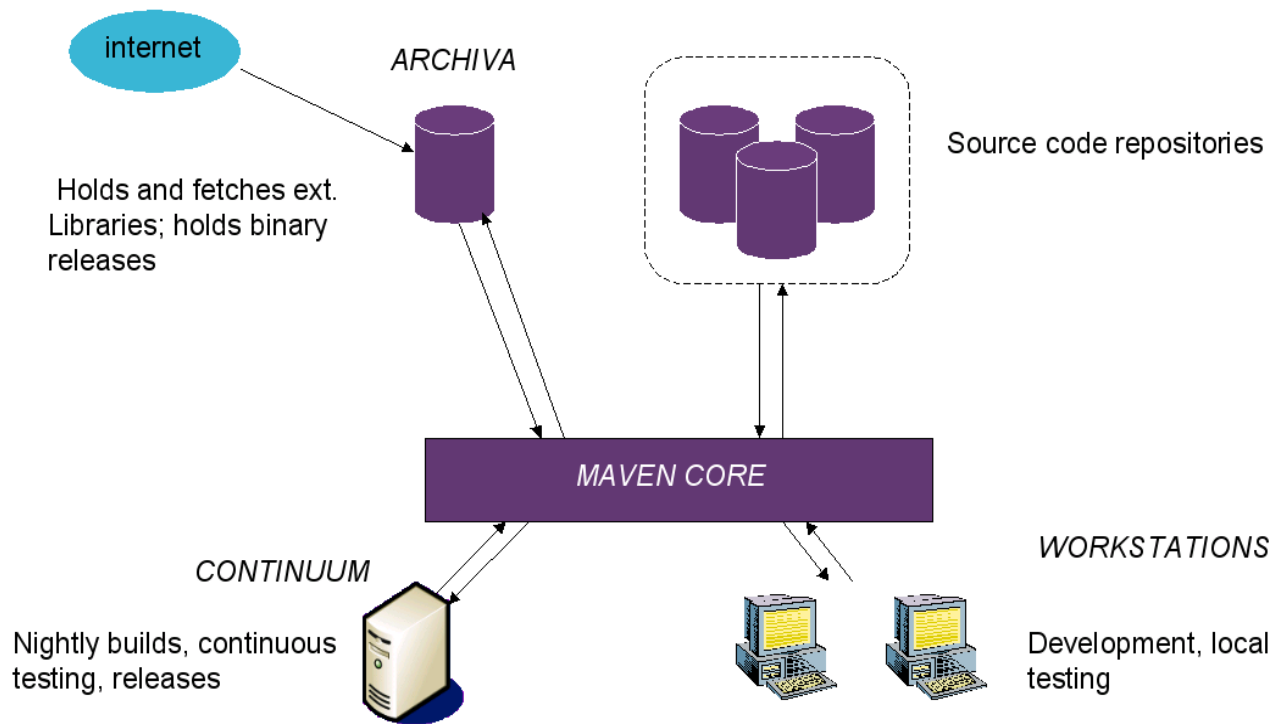
## Beispiele aus CoLab

- Anwendungs-spezifische Funktionalitäten
  - Detaillierte Auf-/Überarbeitung pro Release
  - [http://colab.mpdl.mpg.de/mediawiki/PubMan\\_Func\\_Spec\\_Browsing\\_and\\_displays](http://colab.mpdl.mpg.de/mediawiki/PubMan_Func_Spec_Browsing_and_displays)
- Institutsspezifische Spezifikation
  - Migration MPI PL Daten
  - [http://colab.mpdl.mpg.de/mediawiki/EDoc\\_to\\_PubMan\\_migration/MPIPL](http://colab.mpdl.mpg.de/mediawiki/EDoc_to_PubMan_migration/MPIPL)
- Solution-übergreifende Funktionalitäten
  - Visibility/Zugriffsrechte auf eSciDoc items
  - [http://colab.mpdl.mpg.de/mediawiki/ESciDoc\\_Access\\_Rights](http://colab.mpdl.mpg.de/mediawiki/ESciDoc_Access_Rights)



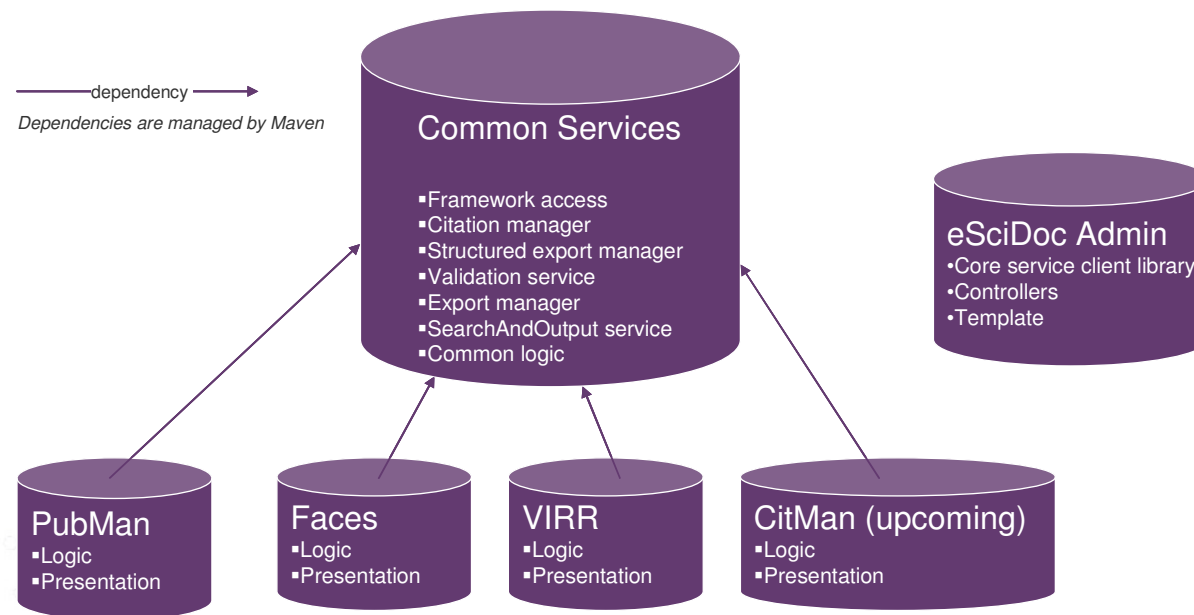


## Beispiel Build&Development Umgebung





## Beispiel Code - Repositories





## Gemeinsames Erarbeiten einer Infrastruktur – Bsp FIZ-MPDL Meeting

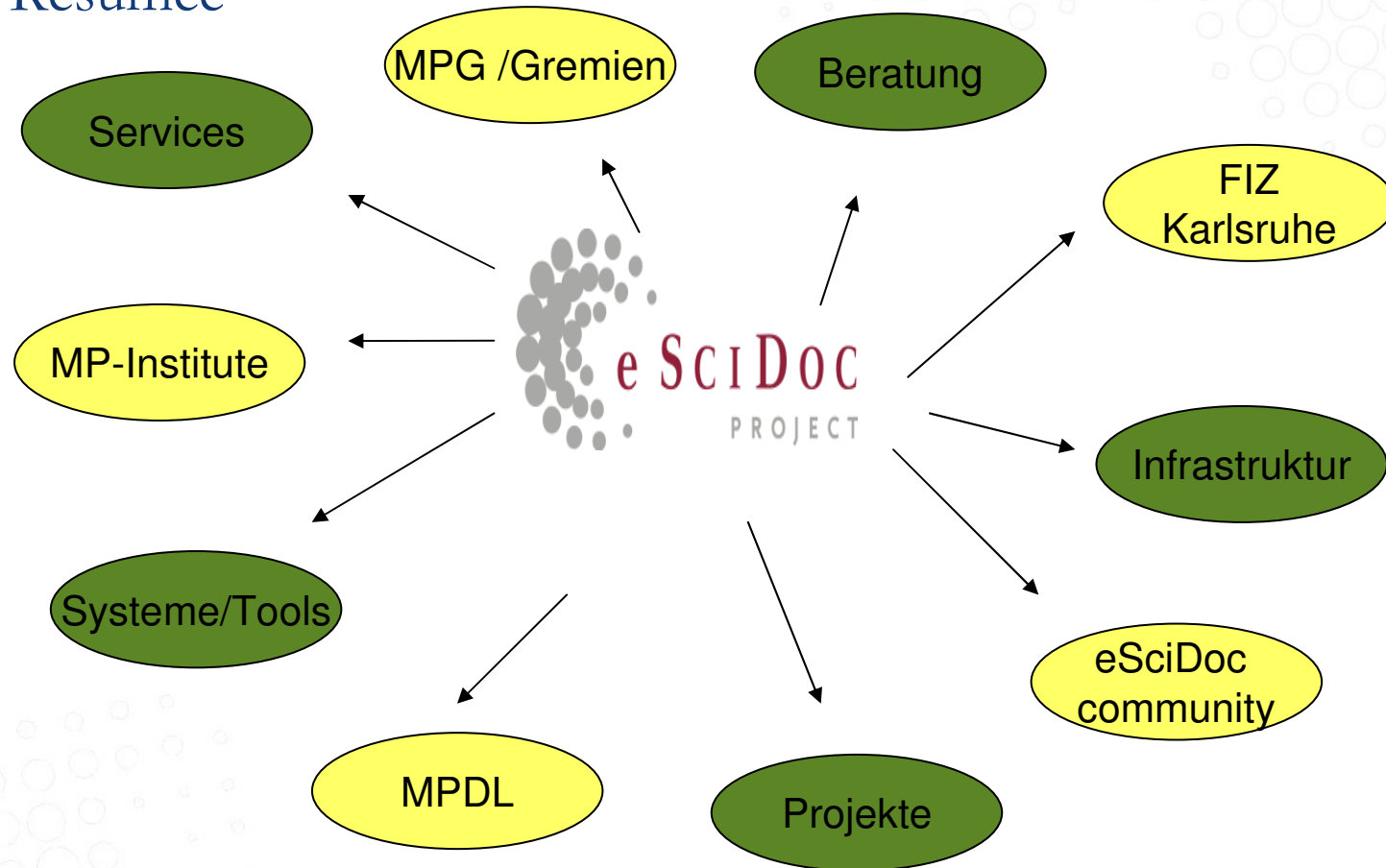
### Contents [\[hide\]](#)

#### 1 Agenda

- 1.1 Last Video conference outcome
- 1.2 (pre)Release 1.0 critical issues (14.10)
  - 1.2.1 Outcome
- 1.3 Overview on new services developed by MPDL(14.10)
  - 1.3.1 Control of named entities/Authority records
  - 1.3.2 Export service extension
- 1.4 Containers and their members(14.10)
  - 1.4.1 Outcome
- 1.5 CModel and CModel handler
  - 1.5.1 Outcome
- 1.6 Batch operations and optimistic locking strategy
  - 1.6.1 Outcome
- 1.7 Support for Japanese characters(14.10)
  - 1.7.1 Outcome
- 1.8 Relation Handler
  - 1.8.1 Outcome
- 1.9 TOC Handler(14.10)
  - 1.9.1 Outcome
- 1.10 PubMan questions
  - 1.10.1 Outcome
- 1.11 Migration of data between stable releases
  - 1.11.1 Outcome
- 1.12 Group handler
  - 1.12.1 Outcome
- 1.13 Miscellaneous
- 1.14 Interoperability(14.10)
- 1.15 Ingestion of data
- 1.16 Workplan until end 2008/begin 2009



## Resümee





Vielen Dank!

Fragen, Feedback, Kommentare ...?