



Einblick Software Entwicklung – Akteure, Aufgaben, Abstimmungen

MPG PubMan Days 2009

16. Februar 2009, Leipzig

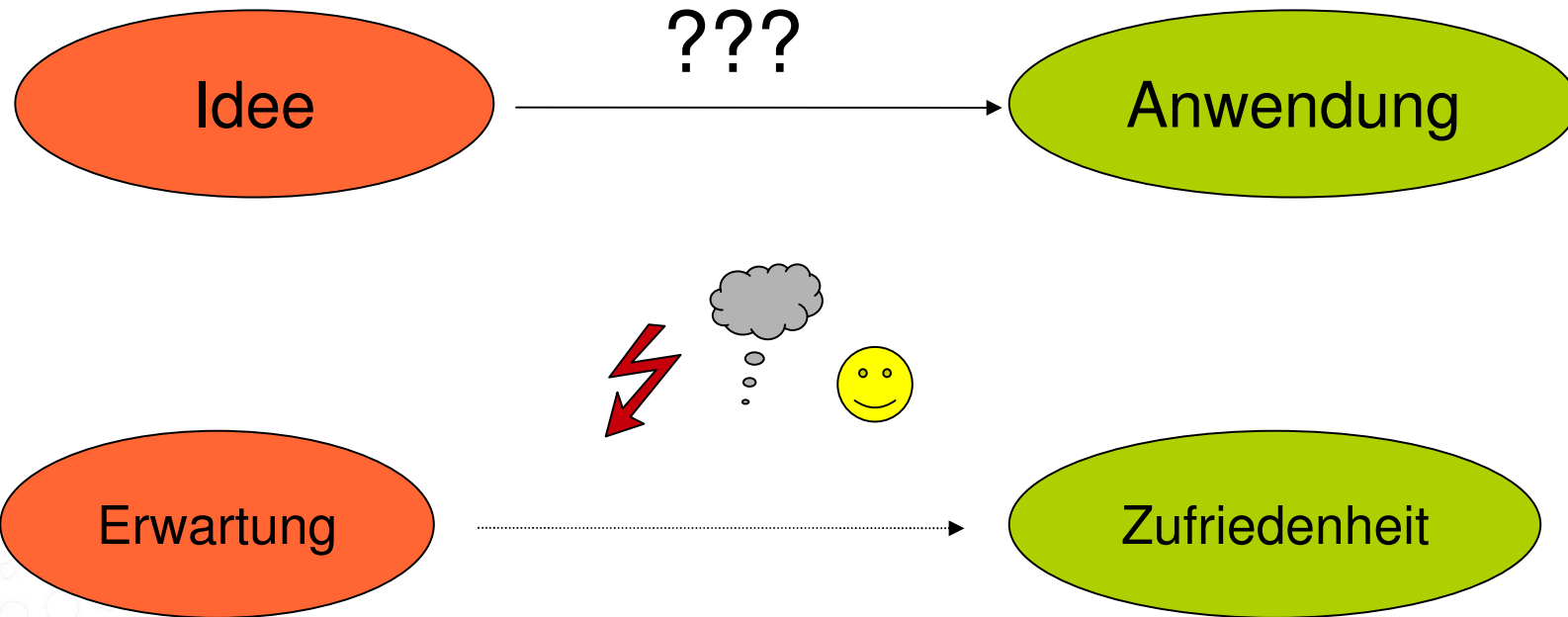
MPI Kognitions- und Neurowissenschaften

Tschida



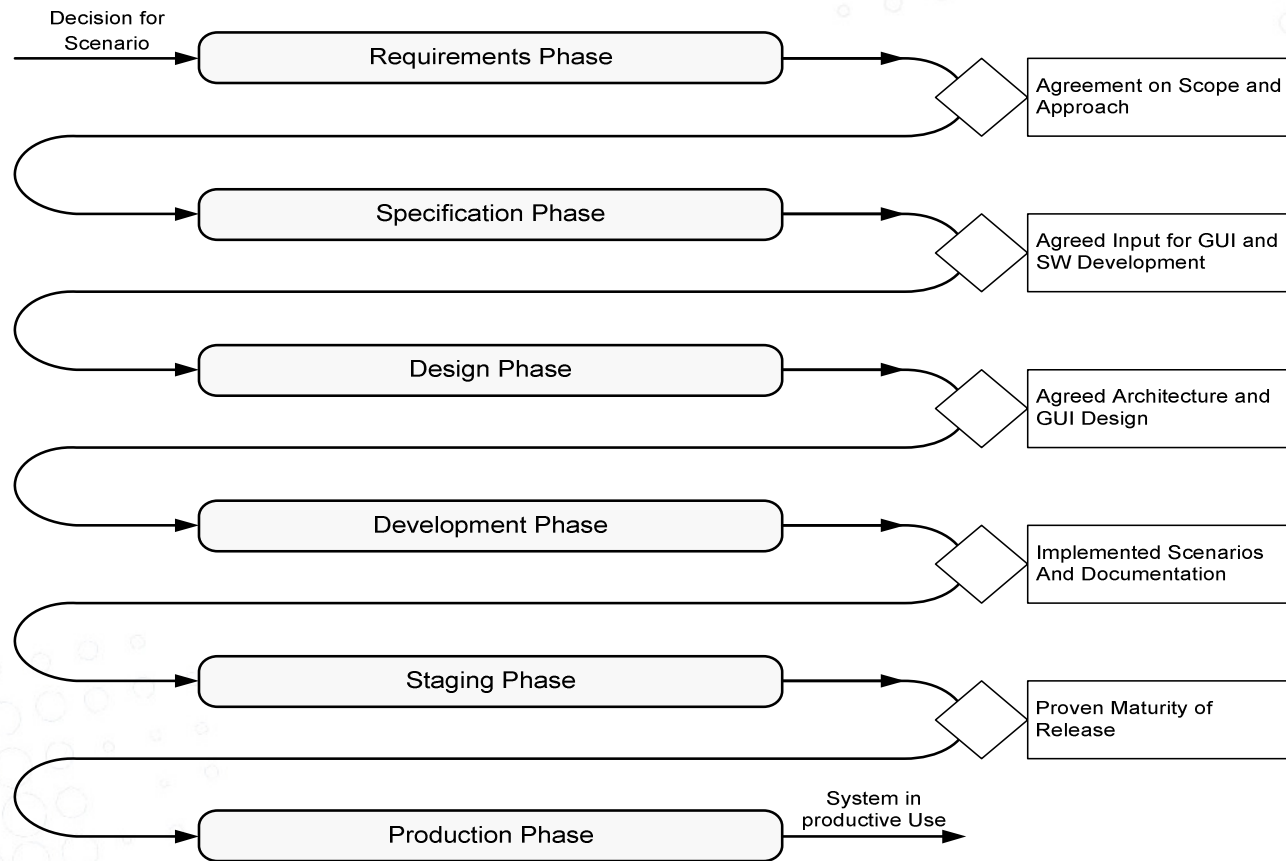


Software/Service Entwicklung en gros ...





... und en detail





Ebenen der Release-Planung

- Langfristige, übergeordnete Ziele
 - MPG Gremien (sInfo, BAR, Präsidium)
 - MPDL Abteilungen und Stab
 - Projekte
- Interne Abstimmungsprozesse
 - Zeitliche und inhaltliche Abstimmungen?
 - Artefakte?
 - Effizienz und Effektivität?
 - Kommunikationsdefizite?
- Tools für operative Umsetzung
 - JIRA Issue-Tracking Tool
 - CoLab

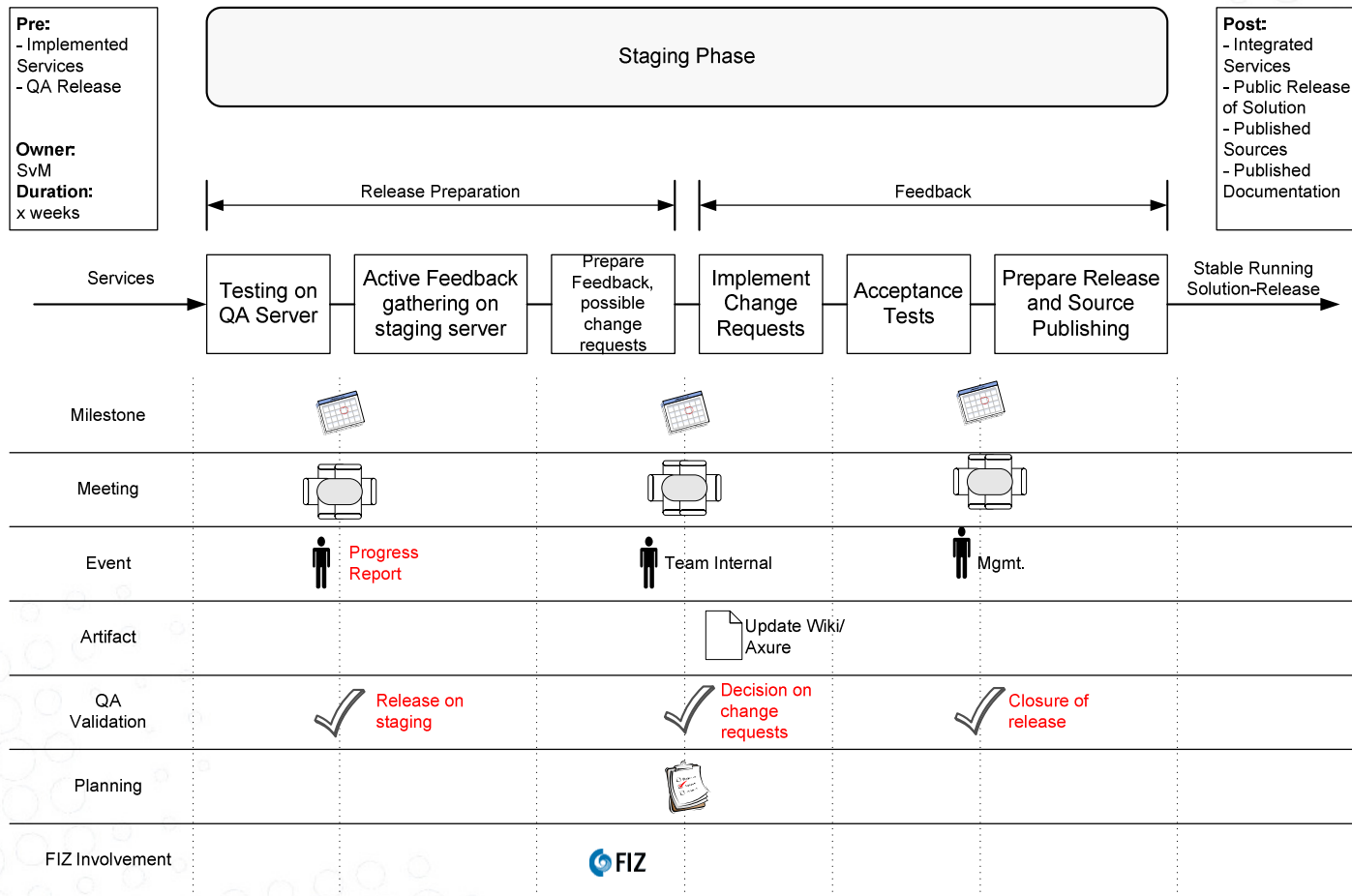


Beispiel Anwendung PubMan – wer macht was?

- Service Management
 - Funktionale Verantwortung
 - Idee => Anforderungen => Szenarien=> Spezifikation
 - Primäre Schnittstelle zum Institut/Partner, Projektplanung
 - Support und Trainings
- Software Development
 - Design und Implementierung
 - Service-Architektur
 - Anwendungen
 - Integration von Services und Anwendungen
 - Primäre Schnittstelle zum Partner FIZ Karlsruhe, Projektplanung
 - Software Dokumentation&Qualität, Release-Environment
- User Interface Engineering
 - Analysen, Konzepte und Design
 - Interface Entwicklung
 - Schnittstelle zu Endnutzern, Projektplanung



Beispiel interner Prozess





Beispiele aus JIRA (screenshots bzw. live)

- Bird Eye View – Überblick über Stand der einzelnen Releases pro Anwendung
- Jede Einheit hat spezifische Tasks (Specification Task, GUI Design Task, Design Task, Implementation Task)
- Verschiedene Projekte (Application Services, Bug Tracking, Test Scenarios, Common Services, Citation Style, etc.)
- Reports/Filter Möglichkeiten (meine Tasks, Tasks offen für 3.8, etc.)
- Kommentare/Diskussionen pro Tasks
- Anhängen von Dokumenten (screenshots, Konzepte)
- Einbettung von Tasks in Abläufe (is blocker of, is depends on, etc.)



1 2 3 4 5 6 7 8 9 10 11 12

Key	Fix Version/s	Summary	Status	REQ	SPEC	GUI	DES	CSS	IMP	STA	PROD	Pr	Workflow
MP-11	R3	Browse&Display	Completed										Restart s
MP-16	R3	Context (Collection) Administration	Completed										Restart s
MP-8	R3	Easy Submission (manual entry, fetch metadata from ArXiv, upload BibTex reference file, create item from template)	Completed										Restart s
MP-13	R3	Export	Completed										Restart s
MP-10	R3	Feeding local webpages - phase 1	Completed										Restart s
MP-14	R3	Organisational unit management	Completed										Restart s
MP-17	R3	Quality Assurance	Completed										Restart s
MP-12	R3	Search	Completed										Restart s
MP-9	R3	Submission	Completed										Restart s
MP-15	R3	User Management	Completed										Restart s
MP-43	R3.5	Export to Endnote 10/11	Completed										Restart s
MP-42	R3.5	Moderator Workspace	Completed										Restart s
MP-41	R3.5	New Framework	Completed										Restart s
MP-44	R3.5	Revision of pubman entry page	Completed										Restart s
MP-50	R3.8	Autosuggest journals	Started										SetStatu Comple Put on h



Select: [Open Issues](#) [Road Map](#) [Change Log](#) [Popular Issues](#) [Subversion Commits](#)

Road Map

- [View personal road map](#)
- [Scope: next 3 versions | all versions](#)

R3.8 ([Release Notes](#))

Progress: 46 of 46 issues have been resolved

	AS-296 FIXED	Design UC_PM_SM_09 validate item		
	AS-425 FIXED	Check revised design for searching and modify in case needed		
	AS-537 FIXED	Test migration of data from currently used build 1.0.beta3 build.297 to pre-release 1.0.beta4 build 306		
	AS-468 FIXED	Definition/re-definition of mappings eDoc - PubMan		
	AS-473 FIXED	Finalize open questions for migration		
	AS-467 FIXED	Specification bibtex Export		
	AS-539 FIXED	Define and implement test cases for search component		
	AS-102 FIXED	Revise Architectural Blueprint		
	AS-194 WONT FIX	Matrix Actions/Roles/Constraints		
	AS-523 FIXED	Define requirements for Shibboleth		
	AS-511 FIXED	Input for mapping and open questions for migration		
	AS-534 FIXED	Item views should enable multiple-lines with scrolling (view All) possibility for longer fields such as Top, Abstract etc.		
	AS-516 FIXED	Run the transformation to item.xml + fulltexts		
	AS-469 FIXED	new citation style		
	AS-498 FIX LATER	test adoption to external MPS Shibboleth providers		
	AS-535 FIXED	Anonymous retrievals of statistics		
	AS-520 FIXED	Change citation schema to proper metadata elements (and change processing component)		
	AS-308 FIXED	Check UC specification for Controlled Vocab		
	AS-528 FIXED	Controlled Vocab review interface implementation		

[User Workload Report](#)
[Version Workload Report](#)
[Time Tracking Report](#)
[Single Level Group By Report](#)
[Multiple Level Group By Report](#)

Preset Filters

- [All](#)
- [Outstanding](#)
- [Unscheduled](#)
- [Assigned to me](#)
- [Reported by me](#)
- [Resolved recently](#)
- [Added recently](#)
- [Updated recently](#)
- [Most important](#)

Project Summary

	Closed	11	2%
	Not Started	57	12%
	Started	20	4%
	On Hold	15	3%
	Ready	58	12%
	Completed	320	68%
	Suggested For Rejection	3	1%
	Rejected	9	2%

Open Issues

By Priority

	Blocker	4	4%
	Critical	4	4%
	Major	14	15%
	Minor	73	77%
	Trivial	1	1%

By Assignee

	Rudolf Nitsch	8	8%
--	-------------------------------	---	----



MPDL JIRA

Configure: [ON](#) | [OFF](#)

All Projects
Application Services (AS)
BirdEye - All Projects (MP)
Citation Style (CS)
Common services (CSRV)
Digital Collections (DC)
FACES (FAC)
FACES Bug Tracking (FACESBUG)
General Activities (GA)
Information Provision - Test (IP)
Infrastructure (FW)
Jira Admin (JA)
MPDL Berlin (MB)
Playground Project (TST)
Prospective Activities (PA)
PubMan Bug Tracking (PUBMAN)
PubMan Bug Tracking - Admin (ADM)
PubMan-Testing scenarios (PMTS)
PUBMAN@NIMS (NIMS)
VIRR (VIR)
VIRR Bug Tracking (VIRRBUG)

Saved Filters <small>(Create New Manage Filters)</small>
ApplicationServices (R3.8)
Application services (R4)
AS-DesignTasks(R3.8)
AS-DesignTasks(R4)
AS - GUIDesignTasks(R3.8)
AS - GUIDesignTasks(R4)
AS - ImplementationTasks(R3.8)
AS - ImplementationTasks(R4)
AS- MaintenanceTasks(R3.8)
AS - OtherIssues(R3.8)
AS - OtherIssues(R4)
AS - SpecificationTasks(R3.8)
AS - SpecificationTasks(R4)
BirdEye - All projects
BirdEye - Faces
BirdEye - PubMan
BirdEye - VIRR
Lars's Tasks
MethodsBasicServices
MyGeneralActivities



Create Issue

Step 1 of 2: Choose the project and issue type...

* Project:

* Issue Type:

- Please select..
- Specification Task
- GUI Design Task
- Design task
- Implementation Task
- Maintenance Task
- Improvement
- New Feature
- Task
- Scope Agreement

next>>

Cancel



Issue Details [\(XML\)](#) | [Word](#) | [Printable](#)

Key: [AS-505](#)

Type: Implementation Task

Status: Completed

Resolution: Fixed

Priority: Minor

Assignee: [Friederike Kleinfurher](#)

Reporter: [Thomas Endres](#)

Votes: 0 [\(View\)](#)

Watchers: 1 [\(View\)](#)

Available Workflow Actions

- [Reopen](#)
- Operations**
- [Assign this issue \(to me\)](#)
- [Clone and Move](#)
- [Clone this issue](#)
- [Comment](#) on this issue
- Create [sub-task](#)
- [Delete](#) this issue
- [Link](#) this issue to another issue
- [Move](#) this issue
- [Convert](#) to sub-task
- Voting:**
You cannot vote or change your vote on resolved issues.

[Application Services](#)

Integrate UnApi-Exports for BibTex, EndNote, APA in PubMan

Created: 31/Jul/08 03:02 PM Updated: Thursday 03:00 PM

Component/s: [Export](#)

Affects Version/s: None

Fix Version/s: [R3.8](#)

[Return to search](#)
Issues (Unresolved)

Original Estimate:	Unknown	Remaining Estimate:	Unknown	Time Spent:	Unknown
--------------------	---------	---------------------	---------	-------------	---------

File Attachments: None

[Manage Attachments](#)

Image Attachments:



1. UnApi integration into View Item version.jpg (87 kb)

Issue Links: **dependence**

This issue depends on:
[AS-485](#) Implement UnAPI interface for Export ...

DaysComment: 9 weeks, 2 days ago



Key: [AS-527](#)
 Type: Design task
 Status: Not Started
 Priority: Minor
 Assignee: [Julia Kurt](#)
 Reporter: [Bulatovic, Natasa](#)

Votes: 0 [\(View\)](#)

Watchers: 0 [\(View\)](#)

Available Workflow Actions

[Suggest for Rejection](#)

[Start Work](#)

Operations

[Assign this issue \(to me\)](#)

[Clone and Move](#)

[Attach file](#) to this issue

[Attach screenshot](#) to this issue

[Clone](#) this issue

[Comment](#) on this issue

Create [sub-task](#)

[Delete](#) this issue

[Edit](#) this issue

[Link](#) this issue to another issue

[Move](#) this issue

[Convert](#) to sub-task

[Voting](#):

You have not voted for this issue.

Migration of <sub> <sup> tags from eDoc data to PubMan

[Return to Search](#)
Issues (Unresolved)"

Created: 26/Aug/08 12:49 PM Updated: 29/Sep/08 11:14 AM

Component/s: [Migration](#)

Affects Version/s: None

Fix Version/s: [R38-Migration](#)

Original Estimate:	Unknown	Remaining Estimate:	Unknown	Time Spent:	Unknown
--------------------	---------	---------------------	---------	-------------	---------

File Attachments:
[Manage Attachments](#)
 1. [sub_superscripts.html](#) (513 kb)
 2. [subscript_superscript_in_UTF-8.txt](#) (2 kb)

DaysComment: 7 weeks, 5 days ago

Description

Please provide proposal/comments on how to deal with <sub> <sup> tags in eDoc metadata when migrating them to PubMan.

[All](#) [Comments](#) [Work Log](#) [Change History](#) [Transitions](#) [Subversion Commits](#)

[Sort](#)

[Forkel Robert](#) - [26/Aug/08 04:44 PM]

[[Permalink](#) | [Delete](#)]

It is hard to recommend a way to handle the migration if there are no ideas yet how to support the migrated data on pubman. in particula must be a mechanism to allow (and validate) inputting of such markup in the edit interfaces; there must be support - or at least an idea I might work - for exporting. as far as i know,.jasperreports doesn't handle such markup by default.

naturally, since with pubman the data is stored (or at least transferred) as xml, the markup should be xml - i.e. not escaped/proprietary n but this would mean support in the jibx bindings would be needed right from the start.

[Bulatovic, Natasa](#) - [27/Aug/08 09:53 AM - edited]

[[Permalink](#) | [Delete](#)]



Issue Details [\(XML\)](#) [Word](#) [Printable](#)

- Key: **PMTS-48**
- Type: **ScenarioTest**
- Status: **Test Fail**
- Priority: **Minor**
- Assignee: [Despoina Kanellopoulou](#)
- Reporter: [Kondic, Nicole](#)
- Votes: 0 [View](#)
- Watchers: 0 [View](#)
- Available Workflow Actions
 - [Restart testing](#)
- Operations
 - [Assign this issue \(to me\)](#)
 - [Clone and Move](#)
 - [Attach file to this issue](#)
 - [Attach screenshot to this issue](#)
 - [Clone this issue](#)
 - [Comment on this issue](#)
 - [Delete this issue](#)
 - [Edit this issue](#)
 - [Link this issue to another issue](#)
 - [Move this issue](#)
 - [Voting:](#)
You have not voted for this issue.
[Vote for it](#) if you wish it to be fixed

PubMan-Testing scenarios

advanced search Testing Szenario 1-3

Created: 07/Jul/08 04:49 PM Updated: Friday 02:35 PM

Component/s: None
 Affects Version/s: None
 Fix Version/s: [3.8.2](#)

[Return to sea](#)
 Issue 3 of 3 issue(s)
[<< Previous](#) | [PMTS](#)

Original Estimate:	Unknown	Remaining Estimate:	Unknown	Time Spent:	Unkn
--------------------	---------	---------------------	---------	-------------	------

[Issue Links:](#)

testing

This issue has bug:

- [PUBMAN-474](#) Quick search - provides also Fulltext...
- [PUBMAN-417](#) Exception when searching with boolean...
- [PUBMAN-412](#) Wrong behaviour of Advanced Search
- [PUBMAN-664](#) error in advances search when i sear...
- [PUBMAN-626](#) Strange behaviour when searching for ...
- [PUBMAN-416](#) Exception when I click on an item in ...

Description

For testing, please use: https://zim01.qwdq.de/repos/smc/trunk/05_Implementation/02_Testing/PubMan_Search_Tests.xls

[All](#) [Comments](#) [Work Log](#) [Change History](#) [Transitions](#) [Subversion Commits](#)

[Friederike Kleinfercher](#) - [15/Jul/08 03:21 PM] [\[Permlink \]](#)

Tested and committed results to rep

[Friederike Kleinfercher](#) - [18/Jul/08 01:50 PM] [\[Permlink \]](#)

Tested and committed results to rep

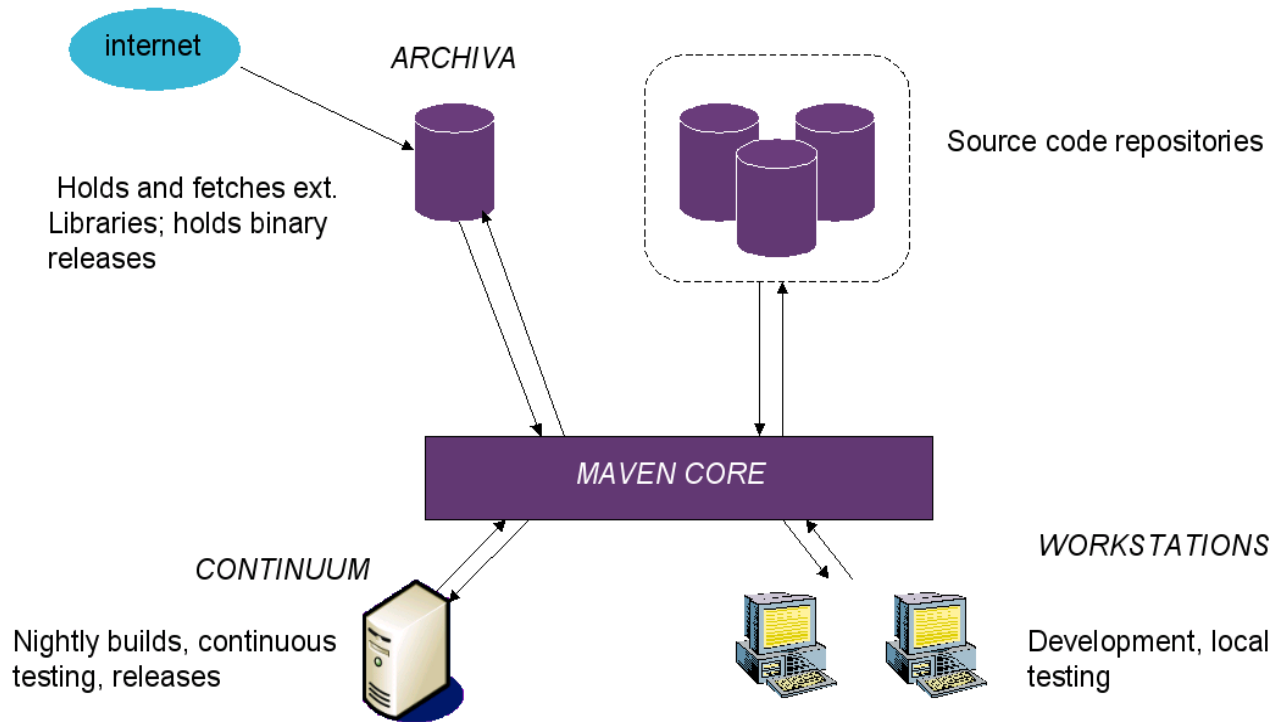


Beispiele aus CoLab

- Anwendungs-spezifische Funktionalitäten
 - Detaillierte Auf-/Überarbeitung pro Release
 - http://colab.mpdl.mpg.de/mediawiki/PubMan_Func_Spec_Browsing_and_displays
- Institutsspezifische Spezifikation
 - Migration MPI PL Daten
 - http://colab.mpdl.mpg.de/mediawiki/EDoc_to_PubMan_migration/MPIPL
- Solution-übergreifende Funktionalitäten
 - Visibility/Zugriffsrechte auf eSciDoc items
 - http://colab.mpdl.mpg.de/mediawiki/ESciDoc_Access_Rights

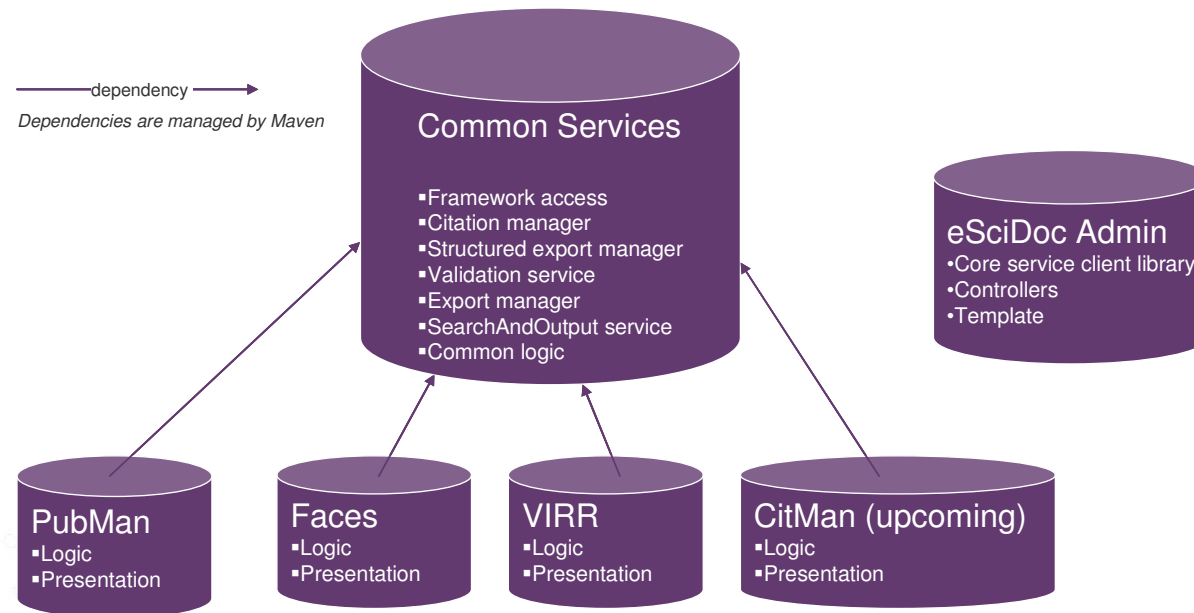


Beispiel Build&Development Umgebung





Beispiel Code - Repositories





Gemeinsames Erarbeiten einer Infrastruktur – Bsp FIZ-MPDL Meeting

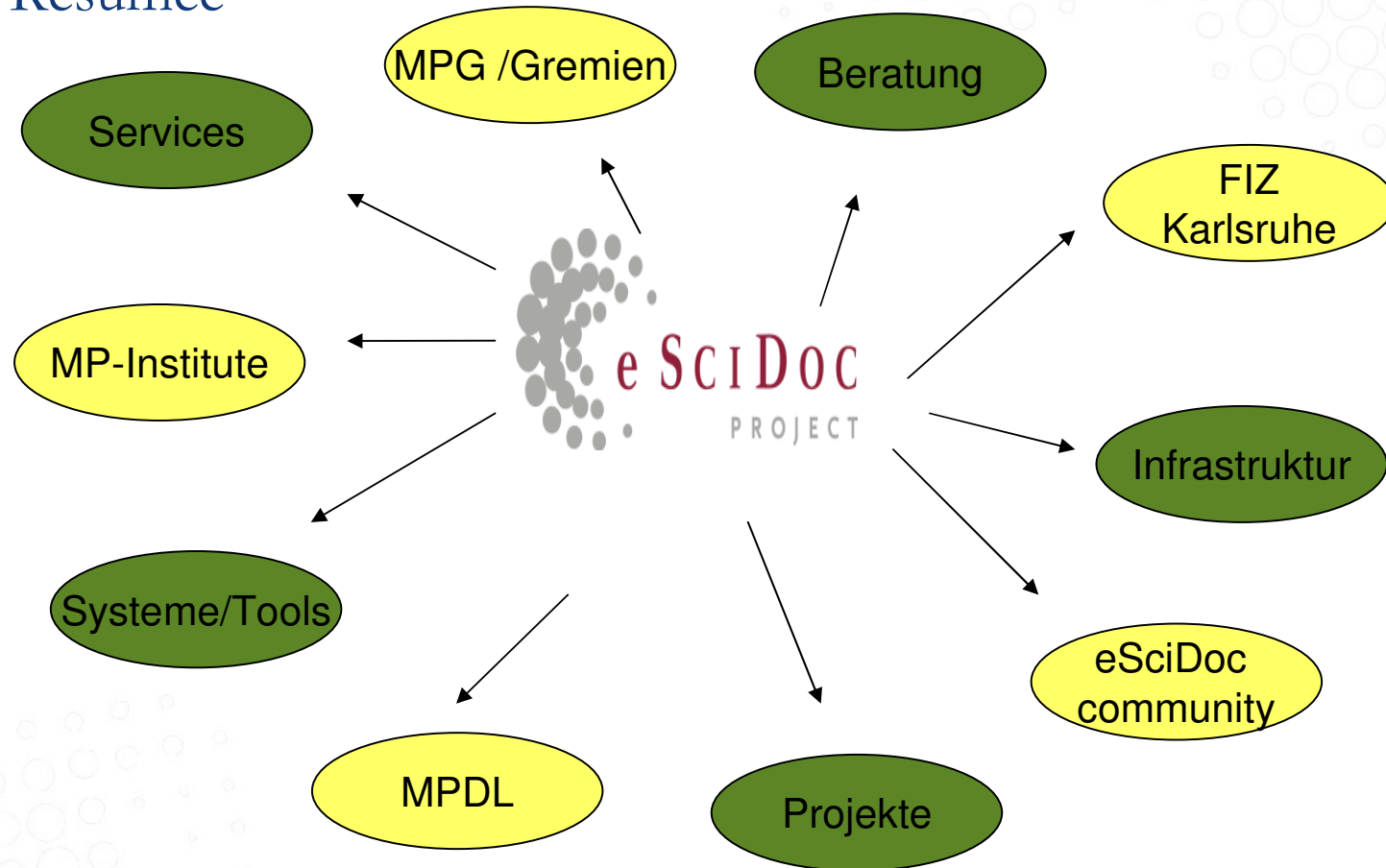
Contents [\[hide\]](#)

1 Agenda

- 1.1 Last Video conference outcome
- 1.2 (pre)Release 1.0 critical issues (14.10)
 - 1.2.1 Outcome
- 1.3 Overview on new services developed by MPDL(14.10)
 - 1.3.1 Control of named entities/Authority records
 - 1.3.2 Export service extension
- 1.4 Containers and their members(14.10)
 - 1.4.1 Outcome
- 1.5 CModel and CModel handler
 - 1.5.1 Outcome
- 1.6 Batch operations and optimistic locking strategy
 - 1.6.1 Outcome
- 1.7 Support for Japanese characters(14.10)
 - 1.7.1 Outcome
- 1.8 Relation Handler
 - 1.8.1 Outcome
- 1.9 TOC Handler(14.10)
 - 1.9.1 Outcome
- 1.10 PubMan questions
 - 1.10.1 Outcome
- 1.11 Migration of data between stable releases
 - 1.11.1 Outcome
- 1.12 Group handler
 - 1.12.1 Outcome
- 1.13 Miscellaneous
- 1.14 Interoperability(14.10)
- 1.15 Ingestion of data
- 1.16 Workplan until end 2008/begin 2009



Resümee





Vielen Dank!

Fragen, Feedback, Kommentare ...?